

**Please do not use GPS navigation. Most systems will get you hopelessly lost miles away on a dead-end road.**

(approx. 35 minutes from Salt Lake City Airport)

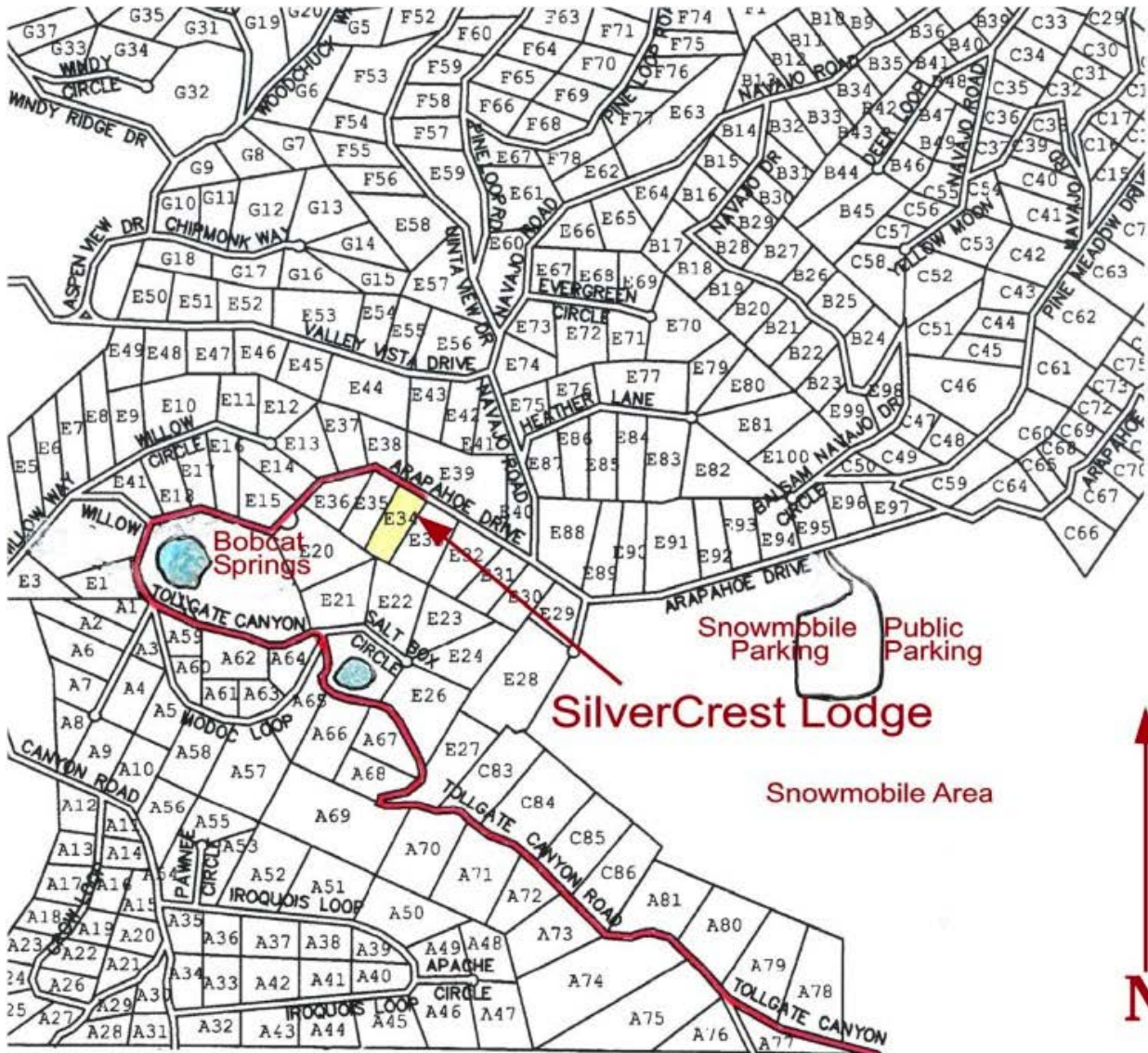
- **I-80 Eastbound from Salt Lake City.**
- **Exit #150 (Tollgate Canyon)**



- **Turn left at the exit & cross over to north side of freeway. Go up the canyon road 3.5 miles.**
- **Keep left on Tollgate Road as you start up the canyon. (see photo)**



- **Follow the road 3.5 miles until you get to Bobcat Springs. Keep to the right at Bobcat Springs on Arapaho Drive.**
- **Go 1/3 mile on Arapaho Drive. Our cabin is the 3rd cabin on the right.**
- **1857 West Arapaho Drive. The address is on the electric meter box at the top of the driveway.**



**Map to:**  
**SilverCrest Lodge**  
**1857 West Arapaho Drive**  
**Summit County, UT 84017**  
**Lot # E34**

